

MADHYA PRADESH

Health Sector Investment Promotion Policy - 2019



Government of Madhya Pradesh
Deptt of Public Health & Family Welfare, Bhopal





MADHYA PRADESH HEALTH SECTOR INVESTMENT PROMOTION POLICY, 2019

**Government of Madhya Pradesh
Department of Public Health & Family Welfare**

Table of Contents

1.	INTRODUCTION	1
2.	VISION	1
3.	MISSION	2
4.	OBJECTIVES	2
5.	DEFINITIONS	2
6.	POLICY PERIOD	5
7.	INDUSTRY STATUS	5
8.	OTHER APPLICABLE POLICIES	6
9.	SCOPE	6
10.	GEOGRAPHICAL CATEGORIZATION	7
11.	ELIGIBLE APPLICANTS	9
12.	FISCAL INCENTIVES	9
	12.1 ALLOTMENT OF LAND AT CONCESSIONAL RATE	9
	12.2 CAPITAL SUBSIDY ALONGWITH LAND ALLOTMENT	10
	12.3 CAPITAL SUBSIDY WITHOUT LAND ALLOTMENT	11
	12.4 ASSISTANCE PER SEAT	12
	12.5 EXPANSION/UP-GRADATION SUBSIDY	12
13.	NON-FISCAL INCENTIVES	13
	13.1 SIMPLIFICATION OF PROCEDURES	13
	13.2 TIME BOUND CLEARANCES	13
	13.3 ONLINE SINGLE WINDOW CLEARANCE	13
14.	GOVERNANCE	13
15.	PUBLIC BENEFITS	14
16.	MONITORING	15
17.	TERMS AND CONDITIONS	15



1. INTRODUCTION

The Madhya Pradesh Health Sector Investment Promotion Policy, 2019 has been introduced with a view to encourage private investment in healthcare infrastructure in the State of Madhya Pradesh. The Government of Madhya Pradesh is committed towards ensuring adequate access to healthcare infrastructure, especially in priority areas where the concentration of medical facilities and resources is the lowest. The Government is equally committed towards ensuring affordability of medical treatment and procedures across the State, especially in specialty healthcare services.

With this vision, through the Policy, the Government endeavors to incentivize private entities to establish and/or expand multi-specialty hospitals, super specialty hospitals, stand-alone healthcare centres and medical colleges throughout the State. The increase in number of such medical establishments would contribute towards increased access to medical facilities and improved availability of skilled medical manpower, thereby reducing the time, effort and costs spent by the general population on availing health services. In this manner, the Government is desirous of making the State of Madhya Pradesh self-sufficient in catering to the medical needs, especially tertiary healthcare needs of its population. With increased access to healthcare and affordability of medical treatment and procedures, the health indicators including, infant mortality rate, maternal mortality rate, number of institutional deliveries, *inter alia*, are expected to significantly improve, thereby improving the health index of the State and raising the overall quality of life of its population.

Towards achieving these goals, it has become pertinent to review the provisions of the existing healthcare investment policy and scheme so as to attract more private entities to undertake investment in the healthcare sector in the State. In this light, this Policy has been introduced with a view to offer additional benefits and incentives to private entities, as well as revise the existing rates of subsidies and increase the upper caps.

2. VISION

To reduce the effort, time and expenditure incurred by the population on healthcare by increasing access to affordable and quality healthcare facilities and medical staff across the length and breadth of the State, with a special focus on backward districts with poor health infrastructure.

3. MISSION

To leverage the capacity available with private entities in the healthcare sector through

- 3.1 Incentivizing private investment in basic healthcare infrastructure in priority districts, and tertiary facilities across the State; and
- 3.2 Promoting private participation in the provision of quality medical manpower through the establishment of medical colleges.

4. OBJECTIVES

- 4.1 To promote setting up of stand-alone healthcare centres, particularly in the underserved districts of Madhya Pradesh;
- 4.2 To plug the gap of tertiary facilities in Madhya Pradesh by promoting multi-specialty hospitals and super specialty hospitals;
- 4.3 To augment the number and quality of medical and nursing staff in Madhya Pradesh by promoting the establishment of medical colleges and encouraging post graduate diploma/ degree courses;
- 4.4 To further incentivise the entry of private entities into the health sector by offering non-fiscal incentives, including single window clearance, simplified application procedure, time bound process, *inter alia*.

5. DEFINITIONS

Capital Investment	Capital Investment refers to the project setting-up costs, and shall include the investment in buildings, fixtures, medical equipment, but shall exclude the investment in land, working capital and operating expenses.
Competent Authority	Competent Authority refers to the statutory body established by the Central Government for the regulation of medical and nursing education in India or by the State government.
Date of Commencement of Commercial Operation	<p>Date of commencement of commercial operation refers to the date on which certificate of registration from Madhya Pradesh Upcharyagriha Tatha Rajopchar Sambandhi Sthapanaye (RagistrikaranTatha Anugyapan Adhiniyam, 1973 was issued to the hospital/Stand Alone Health Care Centre.</p> <p>In case of Medical College and Nursing College, the date of commencement of academic session shall be considered as the date of commencement of commercial operation.</p>

Detailed Project Report	Detailed Project Report refers to the detailed project proposal submitted along with the application seeking benefits or incentives under this Policy.
Effective Date	Effective Date refers to the date notified by the Government as the date on which this Policy shall come into effect.
Executive Committee	Executive Committee refers to: (a) The committee chaired by the Commissioner, Health and comprising of various other officers to be nominated by the Principal Secretary, Health for applicants seeking incentives in respect of Multi-Specialty Hospitals (Grade I or II), Super Specialty Hospitals and Stand-alone Healthcare Centres; or (b) The committee chaired by the Commissioner, Medical Education and comprising of various other officers to be nominated by the Principal Secretary, Medical Education for applicants seeking incentives in respect of Medical Colleges and Nursing Colleges.
Government	Government refers to the State Government of Madhya Pradesh.
Hospital	Hospital refers to any premises providing medical and surgical treatment and nursing care for sick or injured persons including one or more of outpatients, inpatients and diagnostics and/or day care services.
Medical College	Medical College refers to institutions accredited by the Competent Authority and imparting education of medical courses with multi-specialty or super specialty treatment facility and must fulfil the necessary eligibility criteria prescribed by the Competent Authority.
Medical Establishment	Medical Establishment refers to Multi-Specialty Hospital (Grade I or II), Super Specialty Hospital, Stand-alone Healthcare Centre, Medical College or Nursing College.
Multi-Specialty Hospital (Grade I)	Multi-Specialty Hospital (Grade I) refers to Hospitals with two or more specialties with ICU, OT (major, minor), Labour room, Diagnostics, Pharma etc. having at least 30 beds for specialty care with entry level NABH accreditation.
Multi-Specialty Hospital (Grade II)	Multi-Specialty Hospital (Grade II) refers to Hospitals with two or more specialties with ICU, OT (major, minor), Labour room, Diagnostics, Pharma etc. having at least 100 beds for specialty care with entry level NABH accreditation.

Municipal Area	<p>Municipal Area refers to:</p> <ul style="list-style-type: none">(a) the larger urban area under a Municipal Corporation, as is notified by the Governor under Section 7 of the Madhya Pradesh Municipal Corporation Act, 1956;(b) the smaller urban area under a Municipal Council or the transitional area under a Nagar Panchayat, as is notified by the Governor under Section 5 of the Madhya Pradesh Municipalities Act, 1961;(c) Cantonment area, as is notified by the Central Government under Section 3 of the Cantonments Act, 2006.
NABH	NABH refers to the National Accreditation Board for Hospitals & Healthcare Providers, which is a constituent board of the Quality Council of India, set up to establish and operate accreditation program for healthcare organizations.
Nursing College	Nursing College refers to institutions accredited by the relevant Nursing Council or competent authority and fulfilling the necessary eligibility criteria prescribed by the relevant Nursing Council or competent authority.
PG Degree or Specialty Nursing Course	PG Degree or Specialty Nursing Course means post graduate degree programme or specialty nursing courses of minimum one year duration in Cardiothoracic nursing, Critical care nursing, Renal care nursing, Midwifery nursing, Neuroscience nursing, Oncology nursing, Orthopaedic and Rehabilitation nursing, Psychiatric nursing, Neonatal nursing, Operation Theatre nursing, Forensic nursing and Emergency and Disaster nursing recognised by the Indian Nursing Council.
Stand-alone Healthcare Centre	Stand-alone Healthcare Centre refers to Radio imaging centre (X-ray, CT, MRI, USG, Echo etc.), radio Oncology, Cath-lab, Physiotherapy centre, Rehabilitation Centre, Dialysis unit, Non-Communicable Disease (NCD) Unit or an establishment/Day Care Centre analogous to any of them by whatever name called. In case a chain of any Standalone Healthcare Centre is proposed to be established, then each centre shall be considered as an independent Stand Alone Health Care Centre.

State Level Empowered Committee	<p>State Level Empowered Committee refers to the SLEC of MPIDC chaired by the Chief Secretary and comprising of Principal Secretary (Finance), Principal Secretary (Industrial Policy and Investment Promotion) Principal Secretary (Public Health & Family Welfare) Principal Secretary (Medical Education) and Principal Secretary (Commercial Tax).</p> <p>Commissioner, Health Services and Commissioner, Medical Education shall be the special invitee.</p>
Super Specialty Hospital	<p>Super Specialty Hospital refers to tertiary health care Hospitals engaged in diagnosis and treatment of patients, offering one or more Super Specialty Services, with at least 25 percent beds for super specialty care and at least 50 beds in total and having final level of NABH accreditation.</p>
Super Specialty Services	<p>Super Specialty Services shall include the following:</p> <p>Medical Super Specialty:</p> <p>Cardiology, Clinical Haematology including Stem Cell Therapy, Clinical Pharmacology, Endocrinology, Immunology, Medical Gastroenterology, Medical Genetics, Medical Oncology, Neonatology, Nephrology, Neurology, Neuro-radiology etc.</p> <p>Surgical Super Specialty:</p> <p>Cardiovascular Thoracic Surgery, Urology, Neuro-Surgery, Paediatric Surgery, Plastic & Reconstructive Surgery, Surgical Gastroenterology, Surgical Oncology, Endocrine Surgery, Gynaecological Oncology, Vascular Surgery, Spine surgery, Organ transplant etc.</p> <p>The Executive Committee may revise the above list at its discretion.</p>

6. POLICY PERIOD

This Policy shall be effective from the Effective Date and shall remain in operation for a period of not less than 5 years from the Effective Date, unless substituted by another policy or until such time as the Government may deem fit and proper.

7. INDUSTRY STATUS

This Policy accords Health Sector the status of 'Industry' under the Madhya Pradesh Industrial Promotion Policy, 2014. Therefore, eligible Medical Establishments may also avail incentives under the Madhya Pradesh Industrial Promotion Policy, 2014, as amended from time to time.

8. OTHER APPLICABLE POLICIES

This Policy would provide benefits and incentives in conjunction with any other applicable policy in operation, issued by the Government of Madhya Pradesh or the Government of India. In the event of this Policy or any other policy offering *similar or identical* benefits or incentives, an applicant may choose a particular provision from *either this Policy or any other policy, but not from both*.

However, under no circumstances, the total fiscal incentives received under all applicable policies/schemes shall exceed 75% of the Capital Investment made by the applicant in the Medical Establishment.

9. SCOPE

9.1 The following Medical Establishments commencing operations on or after the Effective Date of the Policy, but before the expiry of the Policy shall be eligible for availing benefits and incentives under this Policy:

9.1.1 For Multi-Specialty Hospital Grade-I

- a. Minimum Capital Investment of at least **INR 5 Cr**
- b. At least 30 beds for specialty care;

9.1.2 Multi-Specialty Hospital Grade-II

- a. Minimum Capital Investment of at least **INR 15 Cr**
- b. At least 100 beds for specialty care;

9.1.3 Super Specialty Hospital

- a. Minimum Capital Investment of at least **INR 12 Cr**
- b. At least 50 beds for specialty care including at least 25 percent beds for super specialty care

9.1.4 Medical College - Minimum Capital Investment of at least **INR 150 Cr**

9.1.5 Nursing College commencing Post Graduate Degree programme or Specialty Nursing Courses;

9.1.6 Stand-alone Healthcare Centre.

9.2 The following Medical Establishments undertaking expansion of capacity or up-gradation of diagnostic and treatment facilities for tertiary health care equivalent to Super Specialty Hospital on or after the Effective Date of this Policy, but before the expiry of the Policy shall also be eligible for availing benefits and incentives as per terms and conditions specified in **12.3** of this policy:

9.2.1 Any existing hospital expanding its capacity equivalent to Multi Specialty Hospital Grade-I or Multi Specialty Hospital Grade-I expanding its capacity equivalent to Multi Specialty Hospital Grade-II such that hospital bed capacity should be expanded by at least 50 percent of existing bed capacity.

9.2.2 Any Super Specialty Hospital expanding its capacity such that capacity of hospital bed should be expanded by at least 50 percent of existing bed capacity.

9.2.3 Any existing hospital or Multi Specialty Hospital Grade-I expanding its capacity equivalent to Super specialty hospital such that hospital bed capacity should be expanded by at least 50 percent of existing bed capacity.

9.2.4 Any existing hospital or Multi Specialty Hospital Grade-I upgrading up-gradation of diagnostic and treatment facilities for tertiary health care equivalent to Super Specialty Hospital.

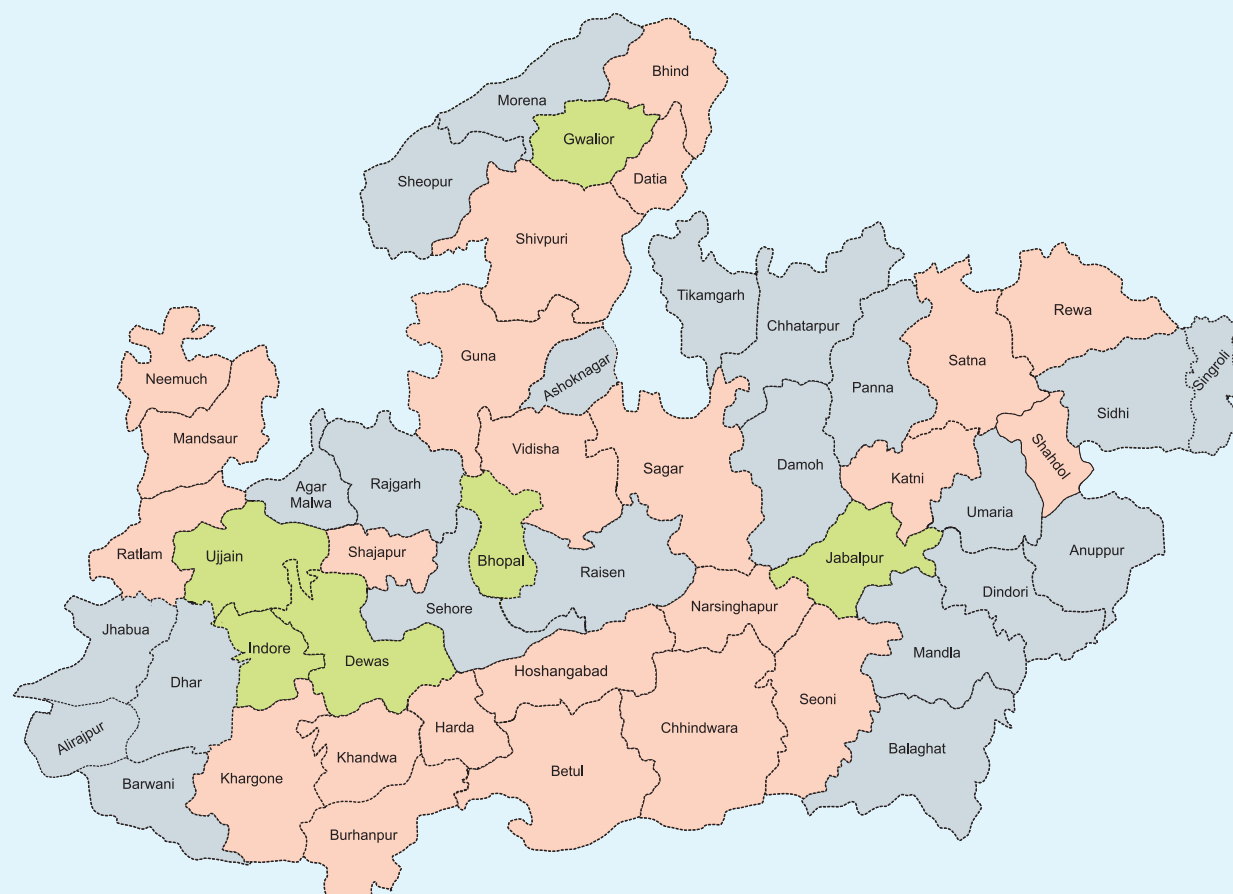
9.2.5 Any existing hospital or Multi specialty hospital grade-II expanding its capacity by at least 50%, in this case total number of beds should be at least 150.

10. GEOGRAPHICAL CATEGORIZATION

This Policy shall extend to the entire State of Madhya Pradesh, categorized into 3 groups as follows:

Category A:	Bhopal, Dewas, Gwalior, Jabalpur, Indore & Ujjain,;
Category B:	Betul, Bhind, Burhanpur, Chhindwada, Datia, Harda, Hoshangabad, Guna, Katni, Khandwa, Khargone, Mandsaur, Narsinghpur, Neemuch, Ratlam, Rewa, Sagar, Satna, Seoni, Shahdol, Shajapur, Shivpuri, & Vidisha,
Category C:	Agar Malwa, Alirajpur, Anuppur, Ashok Nagar, Barwani, Balaghat, Chhatarpur, Damoh, Dhar, Dindori, Jhabua, Mandla, Morena, Panna, Raisen, Rajgarh, Sehore, Sheopur, Sidhi, Singroli, Tikamgarh, Niwari & Umaria.

Madhya Pradesh - Categorization of Districts



Legend

- Category A** – Better hospital beds and health facilities (more than 1 bed per 1000 population)
- Category B** – Moderate hospital beds and health facilities (more than 0.5 beds per 1000 population)
- Category C** – Poor hospital beds and health facilities (less than 0.5 beds per 1000 population)

11. ELIGIBLE APPLICANTS

The following categories of applicants may be eligible to apply for benefits or incentives under this Policy:

- 11.1 In respect of Multi-Specialty Hospitals Grade-I or Multi-Specialty Hospitals Grade-II, Super Specialty Hospitals and Stand-alone Healthcare Centres:
 - a. Medical graduate registered with the Competent Authority in India; and/Or
 - b. A body, corporate registered under relevant Indian law.
- 11.2 For Medical Colleges, entities eligible to establish a Medical College as per the applicable law issued by the Competent Authority.
- 11.3 For Nursing Colleges, existing Nursing College having their own hospital beds will be eligible if they proposed to offer new Post Graduate Degree programme or Specialty Nursing Courses of at least one year duration recognised by the M.P. Nursing Council.

12. FISCAL INCENTIVES

12.1 ALLOTMENT OF LAND

1. The maximum limit for allotment of land to the Medical establishments on concessional rate would be as per following –

S No.	Medical Establishment	Maximum Limit for Land allotment on concessional rate
1	Multi-Specialty Hospitals Grade-I	1.5 Acre
2	Multi-Specialty Hospitals Grade-II	2.5 Acre
3	Super Specialty Hospitals	1.5 Acre
4	Medical College	Maximum 25* Acre

* As per MSR for the medical college regulations issued by the MCI.

2. Subject to the availability of land, the Department of Revenue may allot land at concessional rates Multi-Specialty Hospitals Grade-I & Multi-Specialty Hospitals Grade-II, Super Specialty Hospitals and Stand Alone Health Care Centre as per following criteria –
 - a. 40% concession outside Municipal Areas in Category **A** districts.
 - b. 75% concession in Category **B** districts.
 - c. 75% concession in Category **C** districts.

3. For the establishment of Medical Colleges, land up to 20 acres shall be allotted at concessional rate:
 - a. 75% concession outside Municipal Areas in Category **A** districts.
 - b. 100% concession in Category **B** districts.
 - c. 100% concession in Category **C** districts.
4. Land shall not be allotted within the Municipal Area in Category **A** districts, under any circumstances. For the avoidance of doubt, it is clarified that private entities may procure land on their own within the Municipal Area and avail benefits as described in this policy.
5. The Government shall grant priority in allotment of land in Category **B** and Category **C** districts.
6. The allotment of land will be done as per the policy for land allotment dated 30th May 2013 issued by the Department of Revenue, Govt of Madhya Pradesh.

12.2 CAPITAL SUBSIDY ALONGWITH LAND ALLOTMENT AT CONCESSIONAL RATE

Capital subsidy for setting up of Medical Establishments shall be paid on Capital Investment, at the following rates and subject to the maximum limits set out below, where allotment of land has been availed under this Policy or any other applicable policy in operation, issued by the Government of Madhya Pradesh or the Government of India:

1. **Multi-Specialty Hospitals Grade-I** shall be eligible for:
 - a. 20% subsidy on Capital Investment, subject to a maximum cap of **INR 2 Cr** in Category **A** districts.
 - b. 30% subsidy on Capital Investment, subject to a maximum cap of **INR 3 Cr** in Category **B** districts.
 - c. 40% subsidy on Capital Investment, subject to a maximum cap of **INR 4 Cr** in Category **C** districts.
2. **Multi-Specialty Hospitals Grade-II** shall be eligible for:
 - a. 20% subsidy on Capital Investment, subject to a maximum cap of **INR 5 Cr** in Category **A** districts.
 - b. 30% subsidy on Capital Investment, subject to a maximum cap of **INR 6 Cr** in Category **B** districts.

- c. 40% subsidy on Capital Investment, subject to a maximum cap of **INR 8 Cr** in Category **C** districts.

3. Super Specialty Hospitals shall be eligible for:

- a. 20% subsidy on Capital Investment, subject to a maximum cap of **INR 3 Cr** in Category **A** districts.
- b. 30% subsidy on Capital Investment, subject to a maximum cap of **INR 5 Cr** in Category **B** districts.
- c. 40% subsidy on Capital Investment, subject to a maximum cap of **INR 7 Cr** in Category **C** districts.

12.3 CAPITAL SUBSIDY WITHOUT LAND ALLOTMENT

Capital subsidy for setting up of Medical Establishments shall be paid on Capital Investment, at the following rates and subject to the maximum limits set out below, where allotment of land has not been availed under this Policy or any other applicable policy in operation, issued by the Government of Madhya Pradesh or the Government of India:

1. Multi-Specialty Hospitals Grade-I shall be eligible for :

- a. 30% subsidy on Capital Investment, subject to a maximum cap of **INR 3 Cr** in Category **A** districts.
- b. 40% subsidy on Capital Investment, subject to a maximum cap of **INR 4 Cr** in Category **B** districts.
- c. 50% subsidy on Capital Investment, subject to a maximum cap of **INR 5 Cr** in Category **C** districts.

2. Multi-Specialty Hospitals Grade-II shall be eligible for:

- a. 30% subsidy on Capital Investment, subject to a maximum cap of **INR 6.5 Cr** in Category **A** districts.
- b. 40% subsidy on Capital Investment, subject to a maximum cap of **INR 8 Cr** in Category **B** districts.
- c. 50% subsidy on Capital Investment, subject to a maximum cap of **INR 10 Cr** in Category **C** districts.

3. Super Specialty Hospitals shall be eligible for:

- a. 30% subsidy on Capital Investment, subject to a maximum cap of **INR 5 Cr** in Category **A** districts.
- b. 40% subsidy on Capital Investment, subject to a maximum cap of **INR 6.5 Cr** in Category **B** districts.
- c. 50% subsidy on Capital Investment, subject to a maximum cap of **INR 8 Cr** in Category **C** districts.

4. Stand-alone Healthcare Centres shall be eligible for:

- a. 30% subsidy on Capital Investment, subject to a maximum cap of **INR 1.5 Cr** outside Municipal Areas in Category **A** districts.
- b. 40% subsidy on Capital Investment, subject to a maximum cap of **INR 2.5 Cr** in Category **B** districts.
- c. 50% subsidy on Capital Investment, subject to a maximum cap of **INR 4 Cr** in Category **C** districts.

12.4 ASSISTANCE PER SEAT

1. Nursing Colleges shall be eligible for financial assistance of **INR 50,000** per seat in Post Graduate Degree Programme OR Specialty Nursing Courses, payable each year, throughout the duration of the course (as stipulated by the Indian Nursing Council).
2. The financial assistance per seat shall be payable only for the first 5 academic batches of each Post Graduate Degree programme OR Specialty Nursing Courses offered by Nursing Colleges.
3. The financial assistance per seat shall be given to the Nursing College who has its own hospital beds and not dependent upon government beds as per MPNC rules, 2018.
4. The financial assistance per seat shall be payable against those seats where the candidate has obtained passing marks/grades in all prescribed subjects in the course curricula.

12.5 EXPANSION/UPGRADATION SUBSIDY

The hospitals shall be given benefits/incentives for expansion of capacity or Up-gradation of diagnostic and treatment facilities for tertiary health care equivalent to Super Specialty Hospital as per the provisions specified in **9.2** of this policy on following terms and conditions:

1. Hospitals will not be allotted land at concessional rates for expansion/up-gradation.
2. Hospitals which have availed benefits or incentives under this Policy shall not be eligible for availing expansion subsidy till the expiry of 5 years from the sanction of such benefits or incentives.
3. Expansion/Up-gradation subsidy will be sanctioned one time only.

13. NON-FISCAL INCENTIVES

13.1 SIMPLIFICATION OF PROCEDURES

This Policy endeavors to stream-line the application procedure for allotment of land and other fiscal incentives. The Executive Committee shall scrutinize and appraise all applications, irrespective of the incentives applied for.

13.2 TIME BOUND CLEARANCES

This Policy endeavours to provide time bound clearances/approvals/permissions/licences, where relevant, for all applications seeking benefits or incentives. In this regard, the Government shall:

- 13.2.1 Stipulate strict timelines for scrutiny and appraisal of the application at each stage; and
- 13.2.2 Delegate necessary powers to officers at different levels to ensure smooth processing and timely disposal of applications.

13.3 ONLINE SINGLE WINDOW CLEARANCE

All applicants applying for benefits or incentives under this Policy shall be afforded the benefit of Single Window Clearance through the portal to be managed by the Madhya Pradesh Industrial Development Corporation. All applications for benefits or incentives shall be processed through the said portal only, which shall be the sole interface for the applicant and the Government for the purposes of availing benefits or incentives under this Policy. All communications, starting from the submission of application to the sanction of benefits or incentives or the rejection of application shall be intimated online through the portal.

14. GOVERNANCE

- 14.1 All investors shall submit their applications online seeking benefits or incentives (including for allotment of land) under this Policy attaching brief details of the project, latest audited balance sheet and Detailed Project Report.
- 14.2 The applications submitted shall be scrutinized and appraised by the Executive Committee, which shall evaluate the eligibility of the applicant and the incentives applied for. The

Executive Committee shall either approve or reject the application within a period of 30 days from the date of submission of the application on the portal. In case the application is rejected by the Executive Committee, the applicant shall be intimated through the portal, along with the grounds for rejection.

- 14.3 Where the applicant has sought allotment of land under this Scheme, the Executive Committee shall, after determining the eligibility of the applicant and minimum land requirement for the project, forthwith forward the application to the Collector of the district wherein the project is proposed to be set-up, and the Collector shall proceed as per the Policy for Land Allotment issued by the Department of Revenue on 30th May, 2013.
- 14.4 The decision of the Collector regarding allotment of land or rejection of the application seeking allotment of land shall be forthwith intimated to the Executive Committee. In case the Collector rejects the application for allotment of land, the Executive Committee shall intimate the applicant and allow time to the applicant to secure the minimum required land area from other sources.
- 14.5 Where the Collector orders allotment of land, the Executive Committee shall forthwith forward the application to the State Level Empowered Committee for its scrutiny, appraisal and in-principle approval. The State Level Empowered Committee shall either grant or refuse in-principle approval within a period of 30 days from the date of receipt of the application from the Executive Committee.
- 14.6 The decision of the State Level Empowered Committee (**SLEC**) shall be forthwith forwarded to the Executive Committee, which shall in-turn intimate the applicant through the portal.
- 14.7 In cases where the application is rejected by the State Level Empowered Committee, the applicant may appeal against such decision to the Cabinet Sub Committee for Investment Promotion within 90 days of the date of rejection of the application through Chief Secretary.
- 14.8 The applicants whose applications have been granted in-principle approval by the State Level Empowered Committee (or the Cabinet Committee for Investment Promotion, as applicable) shall be entitled to receive the approved quantum of benefits and/or incentives, subject to the fulfilment of all terms and conditions stipulated under this Policy and the scheme/guidelines issued hereunder.

15. PUBLIC BENEFITS

Any medical establishment availing benefits or incentives under this Policy, empanelment under **Ayushman Bharat (PMJAY)** or any other state specific social welfare scheme for health care and treatment (if any) shall be mandatory for them.

16. MONITORING

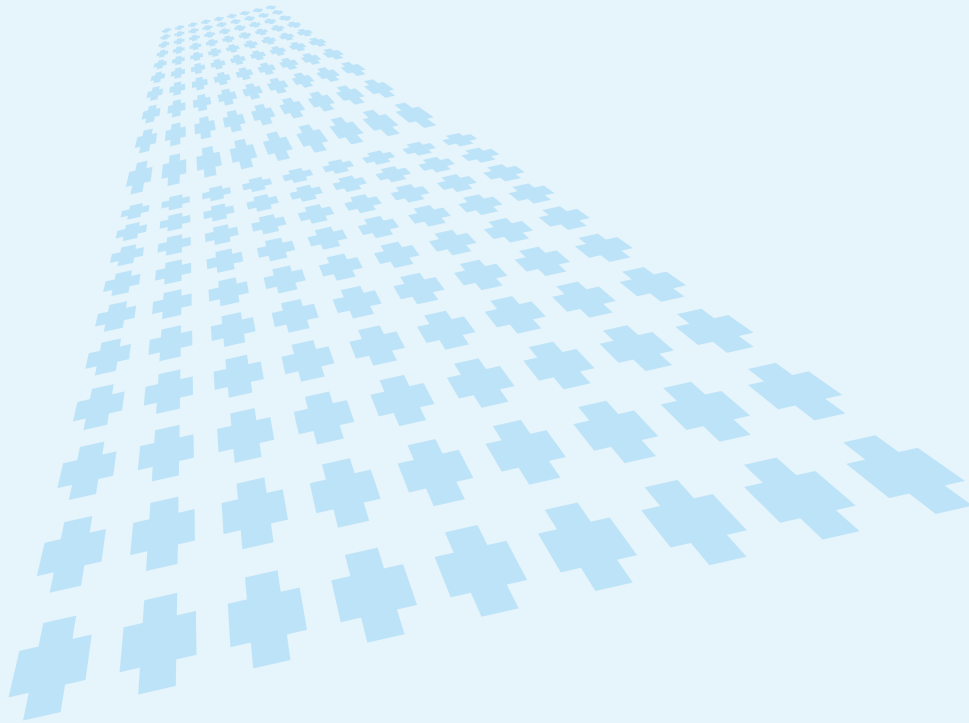
All Medical Establishments availing benefits or incentives under this Policy shall be subject to monitoring by the Nodal officer or by an officer authorized by Commissioner, Health Services. Where a Medical Establishment which has been sanctioned benefits or incentives under this Policy violates or fails to comply with any stipulation in this Policy or the terms and conditions laid down in the scheme/guidelines issued hereunder, the Commissioner, Health Services shall have the power to withhold the disbursement of sanctioned benefits or incentives or to mandate the reimbursement of benefits or incentives already disbursed.

17. TERMS AND CONDITIONS

- 17.1 This Policy may be amended, withdrawn or substituted by the Government at any time, at its discretion.
- 17.2 The Principal Secretary, Health shall have the power to clarify any doubts or settle any disputes, should any arise, regarding the interpretation, application or operation of the provisions of this Policy. Any clarification issued by the Principal Secretary, Health in this regard shall be final and binding.
- 17.3 No applicant shall have the right to claim any benefits or incentives under this Policy merely by virtue of such benefits or incentives being provided for in this Policy.
- 17.4 Implementation of the provisions under this Policy shall be subject to the issuance of detailed scheme/guidelines setting out further eligibility criteria, the terms and conditions subject to which each benefit or incentive may be claimed, the detailed application procedure etc.
- 17.5 In case of any conflict or contradiction in the provisions contained in this Policy and the scheme/guidelines issued there under, setting out in detail the eligibility criteria, terms and conditions, amongst other relevant modalities for availing benefits or incentives under this Policy, the provisions of the scheme/guidelines shall prevail for all intents and purposes.

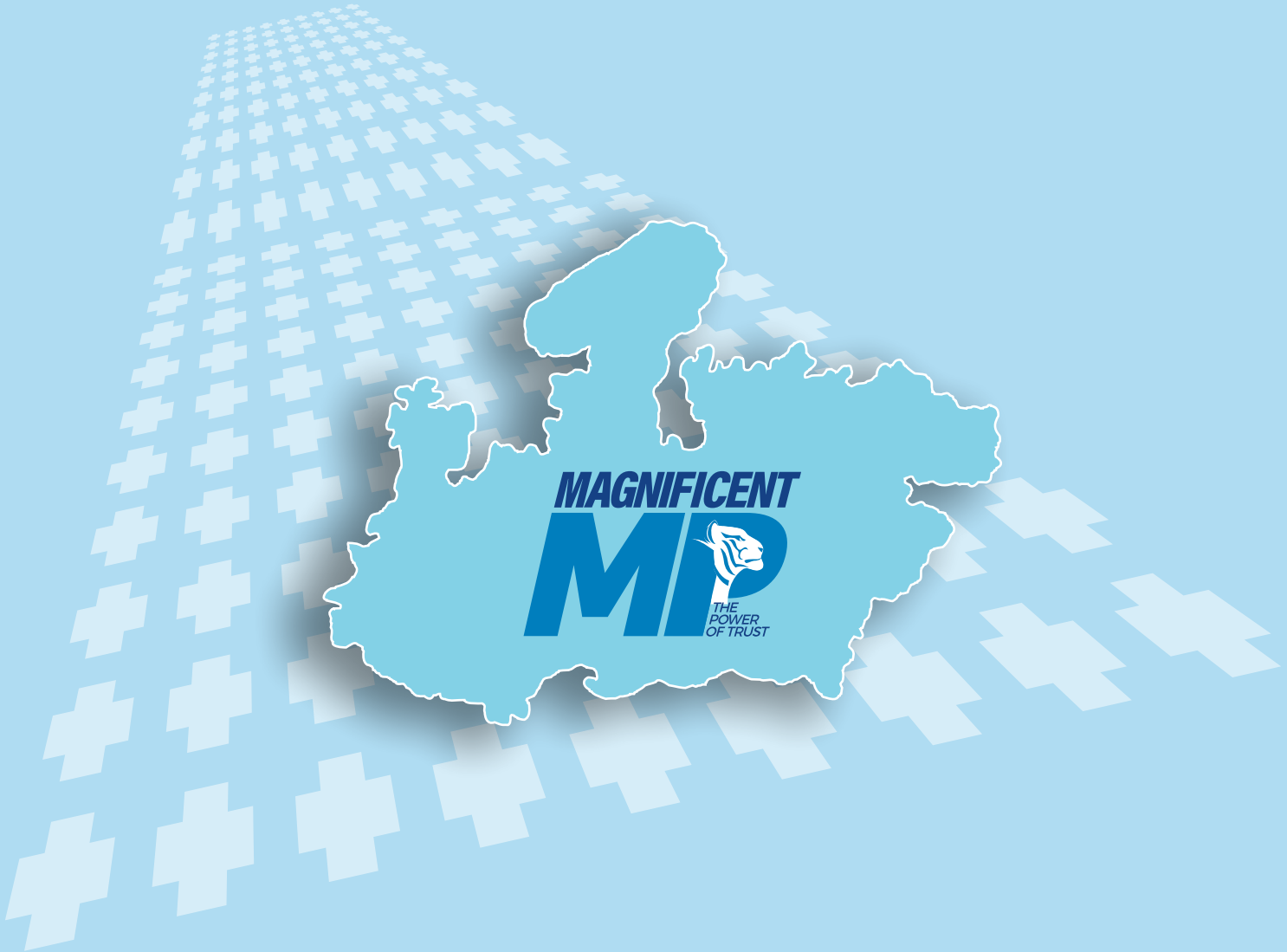
Notes :

This image shows a full page of a document template. It features a light blue background with evenly spaced horizontal black lines, typical of lined paper. There are no margins, text, or other markings present.



CONTACT:

Mr. Rakesh Munshi
Joint Director & Nodal Officer,
Nivesh Prothesahan Yojna,
Directorate of Health Services.
Satpura Bhawan, Bhopal 462004
Phone No. +91755-2441074, 9425303227
E-mail : munshi.rakesh@gmail.com



MAGNIFICENT
MP



THE
POWER
OF TRUST